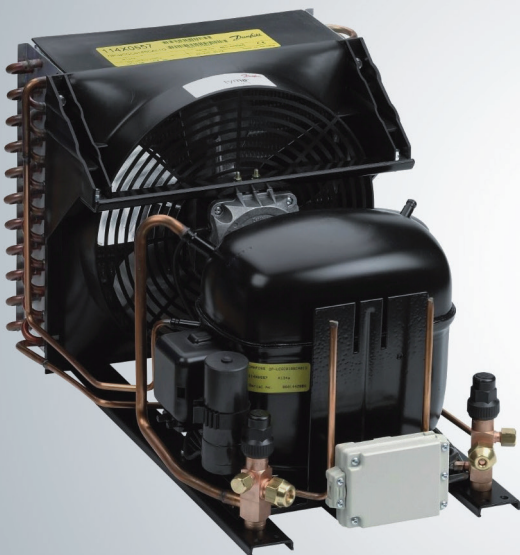


European Catalogue

Optyma™ Bare condensing units

R290, R452A, R134a/R513A, R448A, R449A, R407A, R407C, R407F, R404A/R507



Model	Code	Version	Compressor	Electrical code (1)	Tamb [°C]	Cooling capacity Q [kW] (2)								EcoDesign (3)				
						Te [°C]								Q [kW]	P [kW]	COP	SEPR	
						-30°C	-25°C	-20°C	-15°C	-10°C	-5°C	0°C	5°C					10°C
OP-MCGC010	114X0223	A04	SC10G	G	27	0.148	0.212	0.284	0.365	0.454	0.551	0.656	0.771	0.896				
					32	0.128	0.186	0.252	0.328	0.413	0.507	0.611	0.725	0.853	0.426	0.303	1.41	
					38	0.102	0.153	0.214	0.286	0.367	0.459	0.563	0.679	0.811				
					43	0.080	0.127	0.185	0.254	0.334	0.425	0.530	0.650					
OP-MCGC008	114X0352	A00	NL8.4MF	G	27			0.278	0.352	0.437	0.533	0.641	0.76	0.889				
					32			0.256	0.325	0.405	0.496	0.598	0.71	0.832	0.417	0.282	1.48	
					38			0.232	0.295	0.369	0.453	0.547	0.651	0.765				
					43			0.212	0.271	0.339	0.417	0.505	0.603	0.71				
OP-MCGC011	114X0336	A00	FR11G	G	27	0.163	0.241	0.322	0.406	0.499	0.600	0.715	0.844					
	114X0337	A01			32	0.153	0.223	0.296	0.374	0.460	0.557	0.666	0.793	0.473	0.337	1.41		
	114X0339	A04			38	0.136	0.198	0.263	0.334	0.414	0.505	0.611	0.734					
					43	0.121	0.177	0.236	0.302	0.377	0.465	0.568	0.690					
OP-MCGC012	114X0340	A00	SC12G	G	27	0.213	0.281	0.362	0.457	0.566	0.688	0.824	0.972	1.133				
	114X0341	A01			32	0.185	0.249	0.326	0.416	0.519	0.635	0.764	0.906	1.060	0.535	0.378	1.41	
	114X0343	A04			38	0.153	0.213	0.284	0.368	0.464	0.572	0.694	0.828	0.974				
					43	0.129	0.185	0.251	0.329	0.419	0.522	0.637	0.764					
OP-MCGC015	114X0448	A00	SC15G	G	27		0.323	0.427	0.552	0.694	0.854	1.029	1.218	1.418				
	114X0449	A01			32		0.294	0.397	0.515	0.650	0.800	0.963	1.138	1.323	0.670	0.463	1.45	
	114X0451	A04			38		0.252	0.353	0.466	0.592	0.730	0.879	1.039	1.207				
					43		0.213	0.312	0.421	0.540	0.669	0.807	0.954	1.109				
OP-MCGC018	114X0556	A00	SC18G	G	27		0.400	0.515	0.649	0.803	0.978	1.173	1.389	1.624				
	114X0557	A01			32		0.351	0.465	0.596	0.746	0.915	1.104	1.310	1.532	0.770	0.552	1.40	
	114X0559	A04			38		0.307	0.417	0.543	0.685	0.844	1.019	1.211	1.415				
					43		0.280	0.384	0.502	0.635	0.783	0.946	1.122					
OP-MCGC021	114X0568	A00	SC21MF	G	27			0.623	0.773	0.945	1.137	1.350	1.583	1.833				
					32			0.578	0.720	0.881	1.063	1.264	1.483	1.720	0.910	0.647	1.410	
					38			0.524	0.655	0.804	0.972	1.159	1.364	1.585				
					43			0.480	0.601	0.740	0.897	1.072	1.263					
OP-MCGC021	114X0564	A00	SC21G	G	27		0.463	0.601	0.758	0.933	1.125	1.331	1.551	1.783				
	114X0565	A01			32		0.421	0.550	0.698	0.862	1.042	1.235	1.441	1.658	0.890	0.631	1.410	
	114X0567	A04			38		0.375	0.491	0.624	0.773	0.936	1.112	1.300	1.499				
					43		0.337	0.440	0.559	0.694	0.842	1.003	1.176	1.359				
OP-MCGC026	114X0773	A01	GS26MFX	G	27			0.873	1.125	1.416	1.745	2.113	2.519					
					32			0.809	1.045	1.317	1.625	1.970	2.350	1.352	0.766	1.77		
					38			0.736	0.953	1.202	1.485	1.801	2.151					
					43			0.675	0.877	1.108	1.369	1.662	1.986					
OP-MCGC034	114X0781	A01	GS34MFX	G	27			1.138	1.432	1.772	2.158	2.592	3.072					
					32			1.051	1.330	1.652	2.018	2.429	2.886	1.699	0.982	1.73		
					38			0.946	1.207	1.507	1.848	2.232	2.660					
					43			0.858	1.103	1.385	1.706	2.067	2.470					

MBP

(1) E - 400V-3ph-50Hz Compressor & 230V-1ph-50Hz Fan
 G - 230V-1ph-50Hz Compressor & 230V-1ph-50Hz Fan

(2) Nominal conditions (EN13215), Evaporating temperatures at dew point, Superheat 10K, Subcooling 0K

(3) Rated conditions (EN13215), Evaporating temperature (dew point) -10°C, Ambient air temperature +32°C, Return Gas Temperature 20°C, Subcooling 0K

COP: Coefficient Of Performance link to EN13215 and ErP (Energy related Products) 2009/125/CE

SEPR: Seasonal Energy Performance Ratio link to EN13215 and ErP (Energy Related Products) 2009/125/CE

Tamb [°C]: Ambient Temperature

Te [°C]: Evaporating Temperature

Q [kW]: Cooling Capacity in Kilo Watt

P [kW]: Power Input in Kilo Watt

Version

A00: Without valves and receiver for capillary tubes

A01: With receiver, 2stop valves, brackets and copper pipes for KP

A04: A01 + KP17 WB + FSA-kit + power cord

*R513A is preliminary



For regular updates and detailed capacities, please refer to **Coolselector®2** software



Application	Code number			Model number	Compressor Model	Electrical Code (1)	Refrigerant (2)	Condenser Coil			Fan		Receiver	Dimensions				Suction line		Liquid line		Weight	
								Type	Airflow	Internal Volume	Number	Blade ø	Volume	Chassis	Height	Width	Depth	inch	inch	Gross	Net		
		(m³/h)	(dm³)						(mm)	(L)	mm	mm	mm	inch	inch	Kg	Kg						
LBP	114X1208	114X1209	114X1211	OP-LCHC004TL	TL4CL	G	H	BG2	231	0.25	1	200	0.8	2	226	312	446	1/4"	1/4"	19	17		
LBP	114X1216	114X1217	114X1219	OP-LCHC006FR	FR6CL	G	H	BG2	231	0.25	1	200	0.8	2	226	312	446	3/8"	1/4"	19	17		
LBP	114X1328	114X1329	114X1331	OP-LCHC007NL	NL7CLX	G	H	BG3	518	0.31	1	230	1.1	9	256	321	471	3/8"	1/4"	20	18		
LBP	114X1324	114X1325	114X1327	OP-LCHC008FR	FR8.5CL	G	H	BG3	518	0.31	1	230	1.1	9	256	321	471	3/8"	1/4"	20	18		
LBP	114X1304	114X1301	114X1302	OP-LCHC008NL	NL8.4CLX	G	H	BG3	518	0.31	1	230	1.1	7	256	318	513	3/8"	1/4"	22	20		
LBP	114X1440	114X1441	114X1443	OP-LCHC012SC	SC12CL	G	H	BG4/5	631	0.4	1	254	1.1	10	296	331	487	3/8"	1/4"	25	22		
LBP	114X1444			OP-LCHC012SC	SC12CLX.2	G	H	BG4/5	631	0.4	1	254	1.1	10	296	331	487	3/8"	1/4"	23	20		
LBP	114X1548	114X1549	114X1551	OP-LCHC015SC	SC15CLX	G	H	BG4/5	631	0.4	1	254	1.1	10	296	331	487	3/8"	1/4"	26	23		
LBP	114X1556	114X1557	114X1559	OP-LCHC018SC	SC18CL	G	H	BG4/5	631	0.4	1	254	1.1	11	296	331	513	1/2"	1/4"	26	23		
LBP	114X1600	114X1601	114X1602	OP-LCHC021SC	SC21CL	G	H	BG6	1150	0.63	1	300	1.1	12	350	445	613	1/2"	1/4"	47	41		
LBP		114X1673		OP-LCHC026GS	GS26CLX	G	H	BG6	1150	0.63	1	300	2.4	13	340	430	480	1/2"	3/8"	45	39		
LBP		114X1781	114X1783	OP-LCHC034GS	GS34CLX	G	H	BG7	990	0.84	1	300	2.4	13	340	430	480	1/2"	3/8"	48	42		
LBP		114X1221		OP-LCQC004ML	MLY45Lab	G	Q	BG2	231	0.25	1	200	0.8	5	226	302	513	3/8"	1/4"	19	17		
LBP		114X1337		OP-LCQC006ML	MLY60Lab	G	Q	BG3	518	0.31	1	230	1.1	7	256	318	513	3/8"	1/4"	20	18		
LBP		114X1341		OP-LCQC008ML	MLY80Lab	G	Q	BG3	518	0.31	1	230	1.1	7	256	318	513	3/8"	1/4"	20	18		
LBP		114X1449		OP-LCQC012ML	MLY12Lab	G	Q	BG4/5	631	0.4	1	254	1.1	11	296	331	513	3/8"	1/4"	25	22		
LBP		114X1569		OP-LCQC012MP	MPT12LA	G	Q	BG4/5	631	0.4	1	254	1.1	11	296	331	513	3/8"	1/4"	26	23		
LBP		114X1573		OP-LCQC014MP	MPT14LA	G	Q	BG4/5	631	0.4	1	254	1.1	11	296	331	513	1/2"	1/4"	26	23		
MBP	114X0104	114X0105	114X0107	OP-MCGC003TL	TL3GX	G	G	BG1	243	0.13	1	172	0.8	1	205	289	424	1/4"	1/4"	16	14		
MBP	114X0108	114X0109	114X0111	OP-MCGC004TL	TL4GX	G	G	BG1	243	0.13	1	172	0.8	1	205	289	424	1/4"	1/4"	16	14		
MBP	114X0112	114X0113	114X0115	OP-MCGC005TL	TL5GX	G	G	BG1	243	0.13	1	172	0.8	1	205	289	424	1/4"	1/4"	16	14		
MBP	114X0200	114X0201	114X0203	OP-MCGC006FR	FR6GX	G	G	BG2	231	0.25	1	200	0.8	2	226	312	446	3/8"	1/4"	19	17		
MBP	114X0228			OP-MCGC006NL	NL6.1MF	G	G	BG2	231	0.25	1	200	0.8	3	226	304	432	3/8"	1/4"	19	17		
MBP	114X0216	114X0217	114X0219	OP-MCGC007FR	FR7.5GX	G	G	BG2	231	0.25	1	200	0.8	2	226	312	446	3/8"	1/4"	19	17		
MBP	114X0244			OP-MCGC007NL	NL7.3MF	G	G	BG2	231	0.25	1	200	0.8	3	226	304	432	3/8"	1/4"	19	17		
MBP	114X0224	114X0225	114X0227	OP-MCGC008FR	FR8.5GX	G	G	BG2	231	0.25	1	200	0.8	2	226	312	446	3/8"	1/4"	19	17		
MBP	114X0204	114X0205		OP-MCGC008NL	NL8.4MF	G	G	BG2	231	0.25	1	200	0.8	4	225	313	470	3/8"	1/4"	25	22		
MBP	114X0352			OP-MCGC008NL	NL8.4MF	G	G	BG3	518	0.31	1	230	-	6	256	310	444	3/8"	1/4"	20	18		
MBP			114X0223	OP-MCGC010SC	SC10GX	G	G	BG2	231	0.25	1	200	0.8	2	226	312	446	3/8"	1/4"	21	19		
MBP	114X0336	114X0337	114X0339	OP-MCGC011FR	FR11GX	G	G	BG3	518	0.31	1	230	1.1	8	256	321	458	3/8"	1/4"	20	18		
MBP	114X0340	114X0341	114X0343	OP-MCGC012SC	SC12GX	G	G	BG3	518	0.31	1	230	1.1	8	256	321	458	3/8"	1/4"	22	20		
MBP	114X0448	114X0449	114X0451	OP-MCGC015SC	SC15GX	G	G	BG4/5	631	0.4	1	254	1.1	10	296	331	478	3/8"	1/4"	25	22		
MBP	114X0556	114X0557	114X0559	OP-MCGC018SC	SC18G	G	G	BG4/5	631	0.4	1	254	1.1	10	296	331	478	3/8"	1/4"	27	24		
MBP	114X0568			OP-MCGC021SC	SC21MF	G	G	BG4/5	631	0.4	1	254	1.1	10	296	331	478	3/8"	1/4"	26	23		
MBP	114X0564	114X0565	114X0567	OP-MCGC021SC	SC21GX	G	G	BG4/5	631	0.4	1	254	1.1	11	296	331	513	3/8"	1/4"	26	23		
MBP		114X0773		OP-MCGC026GS	GS26MFX	G	G	BG7	990	0.84	1	300	2.4	13	340	430	480	3/8"	1/4"	39	33		
MBP		114X0781		OP-MCGC034GS	GS34MFX	G	G	BG7	990	0.84	1	300	2.4	13	340	430	480	1/2"	3/8"	40	34		
MBP	114X2424	114X2425	114X2427	OP-MCHB007NF	NF7MLX	G	H	BG4/5	631	0.4	1	254	1.1	10	296	331	478	3/8"	1/4"	25	22		
MBP	114X0301	114X0302	114X0303	OP-MCHC004TL	TL4DL	G	H	BG3	518	0.31	1	230	1.1	6	256	310	444	3/8"	1/4"	18	16		
MBP	114X2316	114X2317	114X2319	OP-MCHC006FR	FR6DLX	G	H	BG3	518	0.31	1	230	1.1	8	256	321	458	3/8"	1/4"	20	18		
MBP	114X0403	114X0404	114X0405	OP-MCHC010SC	SC10MLX	G	H	BG4/5	631	0.4	1	254	1.1	10	296	331	478	3/8"	1/4"	26	23		
MBP	114X0406	114X0407	114X0408	OP-MCHC013SC	SC13MLX	G	H	BG4/5	631	0.4	1	254	1.1	10	296	331	478	3/8"	1/4"	27	24		
MBP		114X2649	114X2651	OP-MCHC015SC	SC15MLX	G	H	BG6	1132	1.1	1	300	1.1	14	350	445	613	1/2"	1/4"	48	42		
MBP	114X0702	114X0703		OP-MCHC018SC	SC18MLX	G	H	BG7	990	0.84	1	300	1.1	14	350	445	613	1/2"	1/4"	39	33		
MBP	114X2765		114X2767	OP-MCHC021GS	GS21MLX	G	H	BG7	990	0.84	1	300	1.6	13	340	430	480	5/8"	3/8"	48	42		

- (1) E - 400V-3ph-50Hz Compressor & 230V-1ph-50Hz Fan
- G - 230V-1ph-50Hz Compressor & 230V-1ph-50Hz Fan
- (2) G - R134a
- H - R404A/R507
- Q - R452A/R404A/R507

Designation	OP-MCGC008	OP-MCGC003	OP-MCGC004	OP-MCHC004	OP-MCHC010	OP-MCHC013	OP-MCHC018	OP-MCGC010	OP-MCGC021
Compressor Description	NL8.4MF	TL3G	TL4G	TL4DL	SC10MLX	SC12MLX	SC18MLX	SC10GX	SC21MF
A00	114X0204	114X0104	114X0108	114X0301	114X0403	114X0406			114X0568
A01	114X0205	114X0105	114X0109	114X0302	114X0404	114X0407	114X0702		
A04		114X0107	114X0111	114X0303	114X0405	114X0408	114X0703	114X0223	
Condenser coil type	BG2	BG1	BG1	BG3	BG4	BG4	BG7	BG2	BG4
Electrical code	G	G	G	G	G	G	G	G	G
Refrigerant	G	G	G	H	H	H	H	G	G

Spare Parts									
Compressor single pack	195B0371	195B0340	195B0570	195B0166	195B0345	195B0351	104L2139	103G6880	104G8120
Condenser	118U0029	118U0028	118U0028	118U0030	118U0031	118U0031	118U0055	118U0029	118U0031
Dual pressure switch	-	060-5393	060-5393	060-5393	060-5393	060-5393	060-5393	060-5393	060-5393
Fan motor	118U0032	118U0032	118U0032	118U0033	118U1009	118U1009	118U1010	118U0032	118U0034
Fan guard	118U0042	118U0041	118U0041	118U0042	118U0044	118U0044	118U0407	-	118U0044
Receiver	118U0517	118U0517	118U0517	118U0523	118U0523	118U0523	118U0523	118U0517	-
Suction valve	118U0079	118U0485	118U0485	118U0485	118U0079	118U0079	118U0047	118U0079	-
Liquid valve	118U0045	118U0045	118U0045	118U0045	118U0045	118U0045	118U0045	118U0045	-
Electrical Characteristics									
LRA Compressor (A)	11.7	5.7	5.7	7.5	19.5	23.6	23.6	11.1	23.6
MCC Fan (A)	0.19	0.19	0.19	0.25	0.39	0.39	0.75	0.19	0.39

Designation	OP-MCGC021	OP-MCGC005	OP-MCGC006	OP-MCGC006	OP-MCGC007	OP-MCGC008	OP-MCGC007	OP-MCGC008	OP-MCGC011
Compressor Description	SC21G	TL5G	FR6G	NL6.1MF	FR7.5G	FR8.5G	NL7.3MF	NL8.4MF	FR11GX
A00	114X0564	114X0112	114X0200	114X0228	114X0216	114X0224	114X0244	114X0352	114X0336
A01	114X0565	114X0113	114X0201		114X0217	114X0225			114X0337
A04	114X0567	114X0115	114X0203		114X0219	114X0227			114X0339
Condenser coil type	BG4	BG1	BG2	BG2	BG2	BG2	BG2	BG2	BG3
Electrical code	G	G	G	G	G	G	G	G	G
Refrigerant	G	G	G	G	G	G	G	G	G

Spare Parts									
Compressor single pack	104G8140	102G4550	103G6660	105G6660	103G6681	103G6780	105G6772	105G6877	103G6980
Condenser	118U0031	118U0028	118U0029	118U0029	118U0029	118U0029	118U0029	118U0030	118U0030
Dual pressure switch	060-5393	060-5393	060-5393	060-5393	060-5393	060-5393	060-5393	060-5393	060-5393
Fan motor	118U0034	118U0032	118U0032	118U0032	118U0032	118U0032	118U0032	118U0033	118U0033
Fan guard	118U0044	118U0041	118U0042	118U0042	118U0042	-	118U0042	118U0043	118U0043
Receiver	118U0523	118U0517	118U0517	-	118U0517	118U0517	-	-	118U0523
Suction valve	118U0047	118U0485	118U0079	-	118U0079	118U0079	-	-	118U0079
Liquid valve	118U0045	118U0045	118U0045	-	118U0045	118U0045	-	-	118U0045
Electrical Characteristics									
LRA Compressor (A)	21.8	5.7	7.5	9.2	8.1	8.2	11.3	11.7	10
MCC Fan (A)	0.39	0.19	0.19	0.19	0.19	0.19	0.19	0.19	0.25

Designation	OP-MCGC012	OP-MCGC015	OP-MCGC018	OP-MCGC026	OP-MCGC034	OP-MCHC006	OP-MCHC015	OP-MCHC007	OP-MCHC021
Compressor Description	SC12GX	SC15GX	SC18G	GS26MFX	GS34MFX	FR6DLX	SC15MLX	NF7MLX	GS21MLX
A00	114X0340	114X0448	114X0556			114X2316		114X2424	114X2765
A01	114X0341	114X0449	114X0557	114X0773	114X0781	114X2317	114X2649	114X2425	
A04	114X0343	114X0451	114X0559			114X2319	114X2651	114X2427	114X2767
Condenser coil type	BG3	BG4	BG4/5	BG7	BG7	BG3	BG6	BG4	BG7
Electrical code	G	G	G	G	G	G	G	G	G
Refrigerant	G	G	G	G	G	H	H	H	H

Spare Parts									
Compressor single pack	104G8240	104G8525	195B0548	107B0700	107B0701	103U2680	104L2869	105F3721	107B0502
Condenser	118U0030	118U0031	118U0031	118U0069	118U0069	118U0030	118U0068	118U0031	118U0069
Dual pressure switch	060-5393	060-5393	060-5393	060-5393	060-5393	060-5393	060-5393	060-5393	060-5393
Fan motor	118U0033	118U0034	118U0034	118U0058	118U0058	118U0033	118U0035	118U0034	118U0058
Fan guard	-	-	-	-	-	118U0043	118U0066	118U0044	-
Receiver	118U0523	118U0523	118U0523	-	-	118U0523	118U0523	118U0523	-
Suction valve	118U0079	118U0079	118U0079	118U0079	118U0047	118U0079	118U0047	118U0079	118U0079
Liquid valve	118U0045	118U0045	118U0045	118U0045	118U0045	118U0045	118U0045	118U0045	118U0079
Electrical Characteristics									
LRA Compressor (A)	12.6	14.8	20.4	20.2	25.7	10	23.5	20	24.4
MCC Fan (A)	0.25	0.39	0.39	0.75	0.75	0.25	0.48	0.39	0.75

MCC - Max Continuous Current
 LRA - Locked Rotor Amps
 Electrical code
 E : 400V-3ph-50Hz Compressor & 230V-1ph-50Hz Fan
 G : 230V-1ph-50Hz Compressor & 230V-1ph-50Hz Fan

Danfoss Cooling

is a worldwide manufacturer of compressors and condensing units for refrigeration and HVAC applications. With a wide range of high quality and innovative products we help your company to find the best possible energy efficient solution that respects the environment and reduces total life cycle costs.

We have 40 years of experience within the development of hermetic compressors which has brought us amongst the global leaders in our business, and positioned us as distinct variable speed technology specialists. Today we operate from engineering and manufacturing facilities spanning across three continents.



Our products can be found in a variety of applications such as rooftops, chillers, residential air conditioners, heatpumps, coldrooms, supermarkets, milk tank cooling and industrial cooling processes.

www.danfoss.com

Danfoss, BP 331, 01603 Trévoux Cedex, France | +334 74 00 28 29



Danfoss can accept no responsibility for possible errors in catalogues, brochures and other printed material. Danfoss reserves the right to alter its products without notice. This also applies to products already on order provided that such alterations can be made without consequential changes being necessary in specifications already agreed. All trademarks in this material are property of the respective companies. Danfoss and the Danfoss logotype are trademarks of Danfoss A/S. All rights reserved.